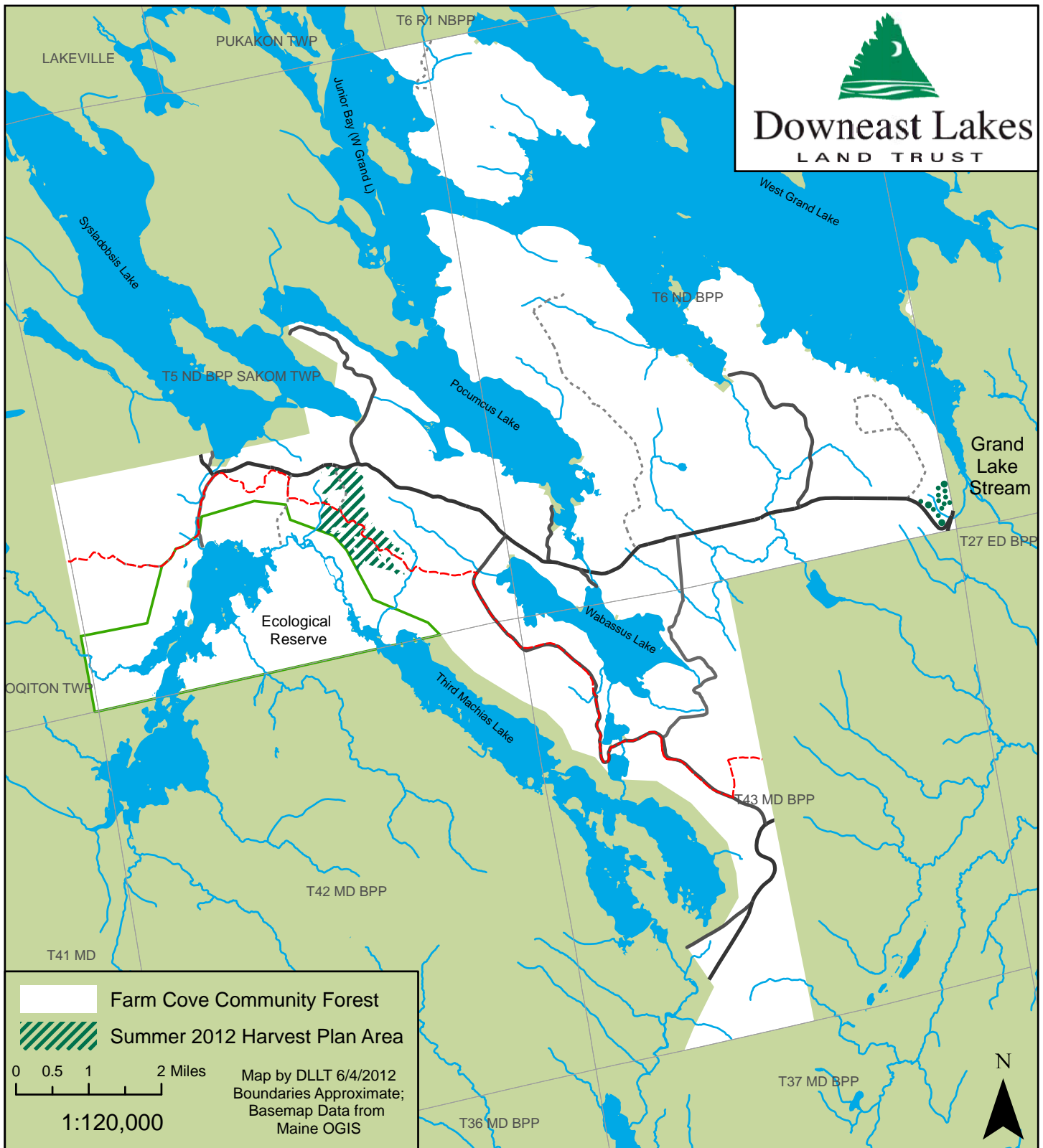


# Farm Cove Community Forest: Planned Area for 2012 Summer Harvest



The 2012 summer harvest will occur within the area displayed on this map.  
 Harvest prescriptions vary within this area, and not all portions of this area will be harvested.  
 The harvest in the western area is planned for the second half of July and August, as weather and site conditions are suitable.  
 The smaller eastern area is a wildlife habitat project expected to be completed in June.  
 For more information about DLLT timber management, visit [www.downeastlakes.org](http://www.downeastlakes.org) or call 207-796-2100.