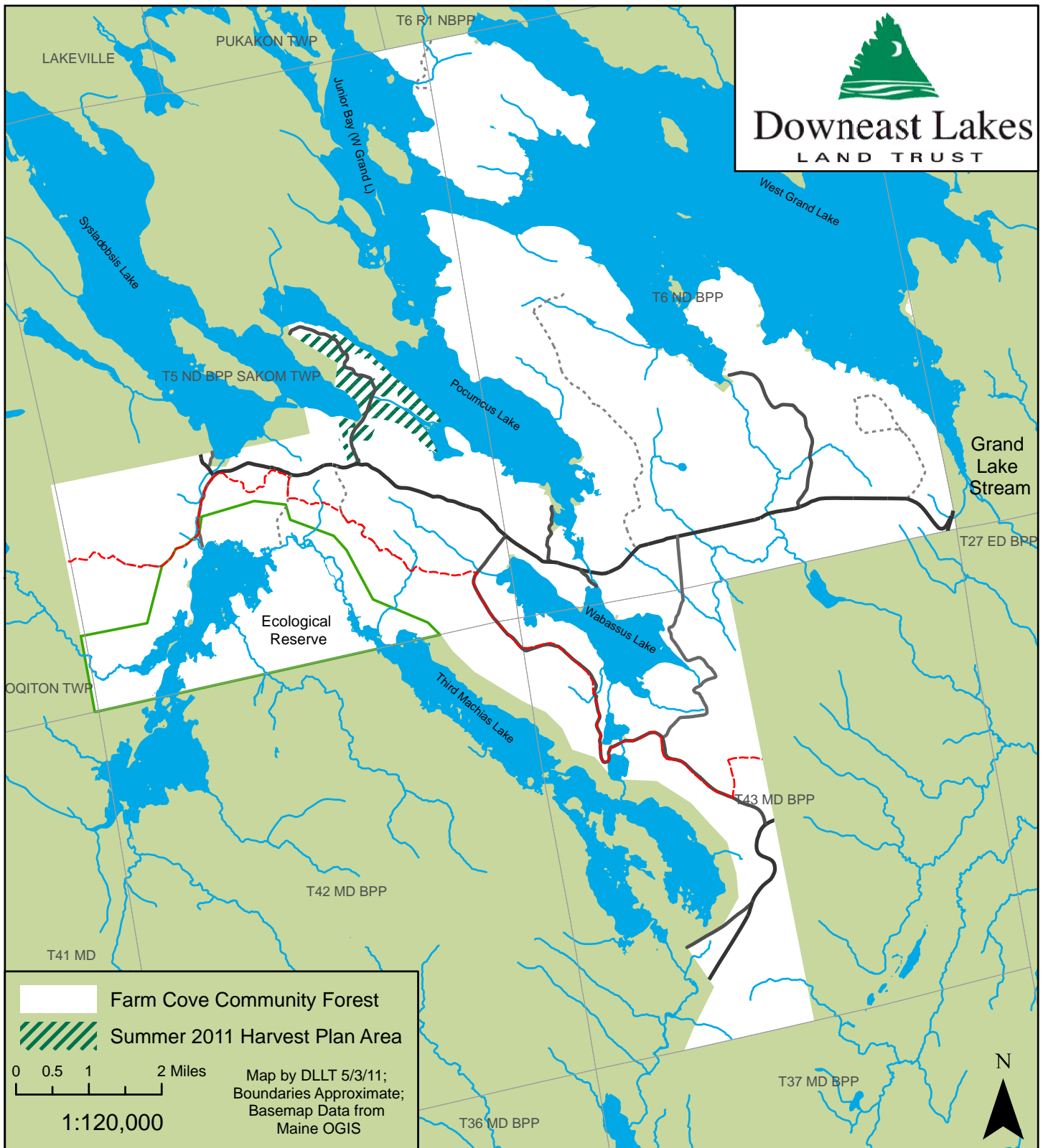


Farm Cove Community Forest: Planned Area for 2011 Summer Harvest



The 2011 summer harvest will occur within the area displayed on this map. Harvest prescriptions vary within this area, and not all portions will be harvested. Lakeshore buffers will be maintained. The harvest and road work are expected to occur between June 15th and August 30, 2011. For more information about DLLT timber management, visit www.downeastlakes.org or call 207-796-2100.